

◆ (Share Screen) **Slide 1: Cats**

Do you see a picture on the screen? What do you see? After the child responds and you are sure your screen is visible:

Now tell me if you see the cats spin around. ◆ After the child responds and you are sure your animation is working:

This time let me know if you hear some chimes when the cats spin around. ◆ After the child responds and you are sure the slide show, animation, and sound are working, begin.

◆ **Slide 2: Cover**

Let's look at this story together. C1. What do you think this story will be about?

After child responds: **This story is called** ◆ **A Day At The Playground.**

Incorrect = 0. Partially correct = 1. Correct = 2. (If needed, see Comprehension Scoring Guide, p. 170 in the PELI Assessment Manual.)

C1: _____

Slide 3: AK

◆ **Here is a sandbox with letters in it.**

◆ **A red box like this is going to show up around some of the letters in the sandbox.**

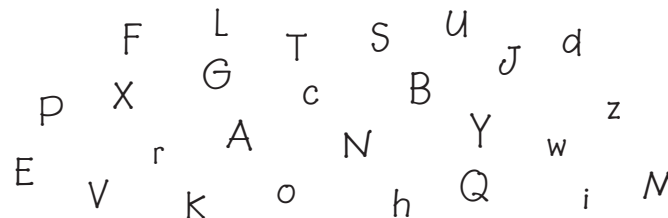
◆ Click to make the box disappear.

Watch carefully. When you see a red box, tell me the name of the letter in the box.

◆ Click once to make each box appear and ask, **What is this letter?** or **Do you know what letter this is?** Click again to make the box disappear.

Continue until the child names three consecutive letters incorrectly. Then click the arrow in the bottom right corner of the slide to advance to the next page.

Circle letters correctly named in English or correct English letter sound (Appendix D, p. 121 in PELI Assessment Manual). Underline letters correctly named in a language other than English. Slash letters named incorrectly or with incorrect letter sound.



AK: _____

◆ **Slide 4: V-OL I**

Here are some pictures of things you might see on a playground.

◆ **A red circle, like this, is going to show up around some of the things on the playground. Watch carefully. When you see the red circle, tell me what is in the circle.**

◆ Click to make the circle disappear.

For each picture click and ask, **What is this?** or **Do you know what this is?**

Click again to make the circle fade.

Discontinue if the child does not respond or says "I don't know" for the first three pictures.

Circle pictures correctly named. Underline related words or words in a language other than English.

◆ V-OL 1. stairs	◆ V-OL 6. rake
◆ V-OL 2. ladder	◆ V-OL 7. fountain
◆ V-OL 3. wheel	◆ V-OL 8. tunnel
◆ V-OL 4. bench	◆ V-OL 9. net
◆ V-OL 5. garbage can	◆ V-OL 10. bike/bicycle rack

V-OL I: _____

◆ **Slide 5: V-OL II**

Now I want you to tell me everything you can about some words. My turn first. I will tell you everything I can about a ladder. ◆ Click and a red circle will appear around the ladder. **A ladder is something you climb up so that you can go down the slide.**

◆ Click again and the red circle will fade.

Now it is your turn. For each word, click and a red circle will appear around the object. Say, **Tell me everything you can about (a/an)_____.** Click again and the red circle will fade. If the child has not named the picture correctly, say, **This is a _____** before asking the child to tell you about it.

Discontinue if the child does not respond or says "I don't know" for the first three words.

V-OL II: _____

Total V-OL: _____

Write child's response verbatim. Score after the assessment is completed. Circle the score for each response.

◆ V-OL 11. stairs	_____	_____	_____	_____	_____	0	1	2	3	4	5
◆ V-OL 12. garbage can	_____	_____	_____	_____	_____	0	1	2	3	4	5
◆ V-OL 13. bench	_____	_____	_____	_____	_____	0	1	2	3	4	5
◆ V-OL 14. net	_____	_____	_____	_____	_____	0	1	2	3	4	5
◆ V-OL 15. bike/bicycle rack	_____	_____	_____	_____	_____	0	1	2	3	4	5

<p>◆ Slide 6: Comp <i>Now I am going to read a story and ask you some questions. This story happens in the evening during dinner time. This story happens on a warm summer day. Lilly and her babysitter, June, were on their way to the park. They were going to meet Lilly’s friend there. Lilly had a new, shiny silver ball. C2. What do you think Lilly wants to do at the park?</i></p>	<p>Score Incorrect = 0. Partially correct = 1. Correct = 2. (If needed, see Comprehension Scoring Guide, p. 170 in the PELI Assessment Manual.)</p>
<p>◆ Slide 7: Comp <i>When Lilly and June got to the park, June’s phone rang. “Oh no!” she said, “Your friend is sick.” C3. How do you think Lilly feels?</i></p>	<p>Comprehension I. Questions</p>
<p>◆ Slide 8: Comp <i>Lilly was sad that her friend was sick. Lilly went to the swing. June asked Lilly if she wanted a push, but Lilly didn’t want to play with June, she wanted to play with a friend her age.</i></p>	<p>C1. 0 1 2</p>
<p>◆ Slide 9: Comp <i>Next Lilly went and sat on the merry-go-round, but she didn’t have a friend to make it spin.</i></p>	<p>C2. 0 1 2</p>
<p>◆ Slide 10: Comp <i>Then Lilly went to the teeter totter and sat, but without a friend it wouldn’t go up and down. Lilly felt sad. She didn’t want to do anything without a friend.</i></p>	<p>C3. 0 1 2</p>
<p>◆ Slide 11: Comp <i>Lilly threw her ball high in the air and watched it land in the sandbox. When she looked at the sandbox, she saw something that made her so happy. C4. What did Lilly see that made her so happy?</i></p>	<p>C4. 0 1 2</p>
<p>◆ Slide 12: Comp <i>Lilly saw a boy in the sandbox! The boy said, “This is a great ball. Can we play with it?”</i></p>	<p>C5. 0 1 2</p>
<p>◆ Slide 13: Comp <i>“Yes!” said Lilly, and they played games with the ball until it was time to go home. Let’s see what you remember about the story. C5. Who was the story about? C6. When did the story happen? C7. Why couldn’t Lilly’s friend come to play with her? C8. What did Lilly sit on at the park? C9. Where did Lilly’s ball land when she threw it?</i></p>	<p>C6. 0 1 2</p>
<p>◆ Slide 14: Comp CII. Here are a few pictures from our story. I am going to read the story again and when I stop, you tell me the words that go in the story. Read the text and pause prior to each item to wait for the child’s response. One day, Lilly and her babysitter walked to the (C10) park. <i>No response or incorrect response: One day, Lilly and her babysitter walked to the park.</i> For subsequent items, if the child does not respond, say the underlined answer. If the child gives an incorrect response, continue reading. They were going to meet Lilly’s friend and play with Lilly’s new (C11) ball. Her friend was sick and couldn’t come. Lilly felt (C12) sad. Without a friend, there was no one to play with. Lilly threw her ball in the air and it landed in the sandbox by a (C13) boy. He asked, “Do you want to (C14) play?” Lilly said, “yes,” and they played catch until it was time to go home.</p>	<p>C7. 0 1 2</p>
<p>◆ Slide 15: PA I Model Look! Here is a shed and ◆ here are some things that go in the shed. Click to make pictures disappear. We are going to play a game and put the pictures in the shed. I’m going to show you a picture and say the word and you tell me the first part of the word. Then you can clap your hands and it will go in the shed. My turn first. ◆ This is a sandbox. The first part of the word “sandbox” is “sand.” “Sand.” “Sandbox.” I said the first part of the word “sandbox,” ◆ so clap your hands and it will go in the shed.</p>	<p>C8. 0 1 2</p>
<p>◆ Slide 16: PA I Practice Your turn. ◆ This is a football. What is the first part of the word “football”? <i>Child responds correctly: Good! Clap your hands and it will go in the shed.</i> ◆ Click to put in the shed. <i>Child responds incorrectly: “Foot” is the first part of the word “football.” Say it with me, “foot.” What is the first part of the word “football”?</i> Correct: Good! Clap your hands and it will go in the shed. ◆ Click to put in the shed. Incorrect: “Foot” is the first part of the word “football.” Say “foot.” Clap your hands and it will go in the shed. ◆ Click to put in the shed.</p>	<p>C9. 0 1 2</p>
<p>◆ Slide 16: PA I Practice Your turn. ◆ This is a football. What is the first part of the word “football”? <i>Child responds correctly: Good! Clap your hands and it will go in the shed.</i> ◆ Click to put in the shed. <i>Child responds incorrectly: “Foot” is the first part of the word “football.” Say it with me, “foot.” What is the first part of the word “football”?</i> Correct: Good! Clap your hands and it will go in the shed. ◆ Click to put in the shed. Incorrect: “Foot” is the first part of the word “football.” Say “foot.” Clap your hands and it will go in the shed. ◆ Click to put in the shed.</p>	<p>Comprehension I. Score _____</p>
<p>◆ Slide 16: PA I Practice Your turn. ◆ This is a football. What is the first part of the word “football”? <i>Child responds correctly: Good! Clap your hands and it will go in the shed.</i> ◆ Click to put in the shed. <i>Child responds incorrectly: “Foot” is the first part of the word “football.” Say it with me, “foot.” What is the first part of the word “football”?</i> Correct: Good! Clap your hands and it will go in the shed. ◆ Click to put in the shed. Incorrect: “Foot” is the first part of the word “football.” Say “foot.” Clap your hands and it will go in the shed. ◆ Click to put in the shed.</p>	<p>Comprehension II. Shared Retell</p>
<p>◆ Slide 16: PA I Practice Your turn. ◆ This is a football. What is the first part of the word “football”? <i>Child responds correctly: Good! Clap your hands and it will go in the shed.</i> ◆ Click to put in the shed. <i>Child responds incorrectly: “Foot” is the first part of the word “football.” Say it with me, “foot.” What is the first part of the word “football”?</i> Correct: Good! Clap your hands and it will go in the shed. ◆ Click to put in the shed. Incorrect: “Foot” is the first part of the word “football.” Say “foot.” Clap your hands and it will go in the shed. ◆ Click to put in the shed.</p>	<p>C10. 0 1</p>
<p>◆ Slide 16: PA I Practice Your turn. ◆ This is a football. What is the first part of the word “football”? <i>Child responds correctly: Good! Clap your hands and it will go in the shed.</i> ◆ Click to put in the shed. <i>Child responds incorrectly: “Foot” is the first part of the word “football.” Say it with me, “foot.” What is the first part of the word “football”?</i> Correct: Good! Clap your hands and it will go in the shed. ◆ Click to put in the shed. Incorrect: “Foot” is the first part of the word “football.” Say “foot.” Clap your hands and it will go in the shed. ◆ Click to put in the shed.</p>	<p>C11. 0 1</p>
<p>◆ Slide 16: PA I Practice Your turn. ◆ This is a football. What is the first part of the word “football”? <i>Child responds correctly: Good! Clap your hands and it will go in the shed.</i> ◆ Click to put in the shed. <i>Child responds incorrectly: “Foot” is the first part of the word “football.” Say it with me, “foot.” What is the first part of the word “football”?</i> Correct: Good! Clap your hands and it will go in the shed. ◆ Click to put in the shed. Incorrect: “Foot” is the first part of the word “football.” Say “foot.” Clap your hands and it will go in the shed. ◆ Click to put in the shed.</p>	<p>C12. 0 1</p>
<p>◆ Slide 16: PA I Practice Your turn. ◆ This is a football. What is the first part of the word “football”? <i>Child responds correctly: Good! Clap your hands and it will go in the shed.</i> ◆ Click to put in the shed. <i>Child responds incorrectly: “Foot” is the first part of the word “football.” Say it with me, “foot.” What is the first part of the word “football”?</i> Correct: Good! Clap your hands and it will go in the shed. ◆ Click to put in the shed. Incorrect: “Foot” is the first part of the word “football.” Say “foot.” Clap your hands and it will go in the shed. ◆ Click to put in the shed.</p>	<p>C13. 0 1</p>
<p>◆ Slide 16: PA I Practice Your turn. ◆ This is a football. What is the first part of the word “football”? <i>Child responds correctly: Good! Clap your hands and it will go in the shed.</i> ◆ Click to put in the shed. <i>Child responds incorrectly: “Foot” is the first part of the word “football.” Say it with me, “foot.” What is the first part of the word “football”?</i> Correct: Good! Clap your hands and it will go in the shed. ◆ Click to put in the shed. Incorrect: “Foot” is the first part of the word “football.” Say “foot.” Clap your hands and it will go in the shed. ◆ Click to put in the shed.</p>	<p>C14. 0 1</p>
<p>◆ Slide 16: PA I Practice Your turn. ◆ This is a football. What is the first part of the word “football”? <i>Child responds correctly: Good! Clap your hands and it will go in the shed.</i> ◆ Click to put in the shed. <i>Child responds incorrectly: “Foot” is the first part of the word “football.” Say it with me, “foot.” What is the first part of the word “football”?</i> Correct: Good! Clap your hands and it will go in the shed. ◆ Click to put in the shed. Incorrect: “Foot” is the first part of the word “football.” Say “foot.” Clap your hands and it will go in the shed. ◆ Click to put in the shed.</p>	<p>Comprehension II. Score _____</p>
<p>◆ Slide 16: PA I Practice Your turn. ◆ This is a football. What is the first part of the word “football”? <i>Child responds correctly: Good! Clap your hands and it will go in the shed.</i> ◆ Click to put in the shed. <i>Child responds incorrectly: “Foot” is the first part of the word “football.” Say it with me, “foot.” What is the first part of the word “football”?</i> Correct: Good! Clap your hands and it will go in the shed. ◆ Click to put in the shed. Incorrect: “Foot” is the first part of the word “football.” Say “foot.” Clap your hands and it will go in the shed. ◆ Click to put in the shed.</p>	<p>Total Comp: _____</p>

◆ **Slide 17: PA I Test Items**

For each item, click to make the picture appear. After the child responds, have the child clap, then click to put it in the shed.

- ◆ **PA1. This is a playground. What is the first part of the word “playground”?**
- ◆ **PA2. This is a softball. What is the first part of the word “softball”?**
- ◆ **PA3. This is a skateboard. What is the first part of the word “skateboard”?**
- ◆ **PA4. This is a shovel. What is the first part of the word “shovel”?**
- ◆ **PA5. This is a wagon. What is the first part of the word “wagon”?**

Optional for 3/4s: If the child does not respond to any items in Part I correctly, you may discontinue the task. Record a 0 for both Part I and Part II.

	1 pt.	0 pt.
PA 1. playground	/p/, /pl/, play	0
PA 2. softball	/s/, /so/, /sof/, soft	0
PA 3. skateboard	/s/, /sk/, /skai/, skate	0
PA 4. shovel	/sh/, /shu/, /shuv/	0
PA 5. wagon	/w/, /wa/, /wag/	0

PA I: _____

◆ **Slide 18: PA II Model**

I have some other things that go in the shed. This time I want you to tell me the first sound in the word. My turn first. ◆ *This is a ramp. The first sound in the word “ramp” is /r/. /r/, ramp. I said the first sound in the word “ramp,”* ◆ *so clap your hands and it will go into the shed.*

◆ **Slide 19: PA II Practice**

Your turn. ◆ *This is a net. What is the first sound in the word “net”?*

Child responds correctly: Good! Clap your hands and it will go in the shed. ◆ Click to put in the shed.

Child responds incorrectly: The first sound in the word “net” is /n/. Say it with me, /n/. What is the first sound in the word “net”?

Correct: Good! Clap your hands and it will go in the shed. ◆ Click to put in the shed.

Incorrect: /n/ is the first sound in the word “net.” Say “/n/.” Clap your hands and it will go in the shed. ◆ Click to put in the shed.

◆ **Slide 20: PA II Test Items**

For each item, click to make the picture appear. After the child responds, have the child clap, then click to put it in the shed.

- ◆ **PA6. This is a bike. What is the first sound in the word “bike”?**
- ◆ **PA7. This is a slide. What is the first sound in the word “slide”?**
- ◆ **PA8. This is chalk. What is the sound in of the word “chalk”?**
- ◆ **PA9. This is a rake. What is the first sound in the word “rake”?**
- ◆ **PA10. This is a leaf. What is the first sound in the word “leaf”?**

	2 pt.	1 pt	0 pt.
PA 6. bike	/b/	/bie/	0
PA 7. slide	/s/	/sl/, /slie/	0
PA 8. chalk	/ch/	/cho/	0
PA 9. rake	/r/	/rai/	0
PA 10. leaf	/l/	/lea/	0

2-pt responses: _____

x2: _____ **+ 1-pt responses:** _____ **= PA II:** _____

Total PA II: _____

◆ **Slide 21: Cats**

That is the end! We are all done. ◆ *Thank you!*